



Εquestrian

Explanatory
Guide



About the Explanatory Guides

Published in August 2015, the Explanatory Guides offer a detailed introduction to each sport at the Rio 2016 Paralympic Games, as well as providing information on a variety of other fundamental topics that may be of importance to teams as they continue their planning and preparations. This guide is divided into several sections:

- a general introduction to Rio de Janeiro and to the Games
- sport-specific information on subjects such as the competition format, schedule and venue; rules; training and qualification criteria
- general information touching on accreditation, ticketing, accommodation, medical services, doping control and transport
- a directory that contains contact details, maps and a daily competition schedule for all sports

All information provided in this Explanatory Guide was correct at the time of publication in August 2015; however, please note that these details may change between this date and the Games. NPCs are advised to check the IPC website and Rio 2016's Rio Exchange (rioexchange.rio2016.com) for important updates on topics, such as to the competition schedule.

Detailed Team Leaders' Guides, covering Games-time plans for every Paralympic sport, will be distributed to NPCs in July 2016.



Welcome to the Equestrian Explanatory Guide for the Rio 2016 Paralympic Games. On behalf of Rio 2016, I am pleased to present this document, the content of which has been produced in close collaboration with the International Equestrian Federation and IPC Sport.

As a commitment to sustainability, these guides are being presented in an electronic-only format. In addition, they have been developed for a mobile-friendly platform; this is an innovative feature Rio 2016 has utilised to make the information more convenient and accessible on a variety of devices.

As the host of the first Games on South American soil, Rio 2016 is committed to showcasing sport in its highest form against the stunning backdrops that Rio de Janeiro has to offer. A variety of competition and training venues, including new and renovated installations, will offer athletes the best conditions to excel in a fair and safe field of play.

In addition, accommodations and facilities at the Paralympic Village will provide an engaging environment and offer the best services to meet the needs of athletes and team leaders during their stay in Rio de Janeiro. New transport services will connect the four competition zones and venues throughout Rio to provide easy access across the city during the Games.

We hope this guide will provide all the necessary information in preparation for your participation at the Games in September 2016. We look forward to welcoming you to the Marvellous City for what is sure to be a memorable experience.

WARM REGARDS,

A handwritten signature in black ink that reads "Rodrigo Garcia". The signature is fluid and cursive, with a small dot at the end.

RODRIGO GARCIA

Rio 2016 Sports Director

Contents

| | |
|---|----|
| Introduction | 5 |
| Welcome to Rio 2016 | 6 |
| Rio, then and now | 6 |
| The city's Paralympic heritage | 7 |
| Rio 2016 | 7 |
| After the Games | 10 |
| Competition | 11 |
| Equestrian at the Paralympic Games | 12 |
| The Equestrian competition | 13 |
| Competition format | 13 |
| The rules | 14 |
| Transportation of horses | 15 |
| Veterinary and farrier services..... | 15 |
| Equestrian competition schedule | 16 |
| Competition and training venue | 18 |
| Competition venue | 19 |
| Training venue | 20 |
| General information | 21 |
| Accreditation | 22 |
| Tickets and accredited seating | 24 |
| Accommodation | 25 |
| Transport | 27 |
| Medical services | 28 |
| Doping control | 30 |
| Sport information | 30 |
| Qualification and entries | 32 |
| Classification | 32 |
| Directory | 34 |
| Rio 2016 Organising Committee for the Olympic and Paralympic Games | 35 |
| International Paralympic Committee (IPC) | 36 |
| International Equestrian Federation (FEI) | 36 |
| Confederação Brasileira de Hipismo (CBH) | 37 |
| Paralympic competition schedule by day..... | 38 |
| Maps | 40 |



INTRODUCTION

Welcome to Rio 2016

The Rio 2016 Paralympic Games will demonstrate the determination of all Brazilians in delivering the greatest festival on Earth, proudly advancing, through sport, the national mantra of progress. These pages offer a brief introduction to Rio de Janeiro, its Paralympic heritage, the city's plans for the Games and the benefits they will bring to Rio and Brazil.

Rio, then and now

The former capital of Brazil, Rio de Janeiro is located in the state of the same name on the south-eastern strip of the country's Atlantic coast. It is one of the most visited cities in the southern hemisphere. In January 1502, the second exploratory expedition by the Portuguese, led by Captain Gaspar de Lemos, reached Guanabara Bay. Legend has it that he entered the bay believing it to be a river, so he named it Rio de Janeiro, literally translated as "River of January".

Rio is a picture-postcard city, with lush green mountains, lakes, blue oceans and miles of white, sandy beaches. It is the home of Sugarloaf mountain, Maracanã stadium, Guanabara Bay and, overlooking it all, the statue of Christ the Redeemer. It is no wonder Rio is known as the "Marvellous City". The friendliness of *cariocas* (as Rio locals are known) can be witnessed in the streets, in the bars and at the beach.

CLIMATE

Rio de Janeiro benefits from a mild to warm climate during the winter month of September. Based on statistics from recent years, athletes can expect an average daily high of around 22-23°C (72-73°F) in the Paralympic Village. On average, relative humidity ranges from a minimum of approximately 60 per cent to a maximum of approximately 80 per cent. The average monthly rainfall during September is 68 millimetres; the prevailing winds are from the south-west and south-east. The average daylight hours in Rio de Janeiro at Games time (August and September) are from 6.00am to 6.00pm.

RIO DE JANEIRO IN 2016

POPULATION:

6,453,682, estimated in 2014

OFFICIAL LANGUAGE:

Portuguese

CURRENCY:

Real/Reais (plural)

LOCAL TIME:

Greenwich Mean Time (GMT) -3

AREA:

1,197 km² (Brazil: 8,515,767 km²)

LATITUDE AND LONGITUDE:

22°54'10" S, 43°12'27" W

ALTITUDE:

2m

GOVERNMENT:

Prefeitura do Rio de Janeiro

www.rio.rj.gov.br

The city's Paralympic heritage

Brazil is a nation with sport in its blood and has always been a serious competitor in the Paralympic Games. Never content with just taking part, the country has long dreamt of hosting the world's biggest sporting event. Brazil's first bid to host the Olympic Games came in 1932, to host the 1936 Games, but Rio de Janeiro failed to advance past the International Olympic Committee's initial selection phase. Sixty years later, Brasília was a candidate for the 2000 Olympic and Paralympic Games, until its bid was withdrawn in the first phase. But Brazilian hopes were not dashed, rooted as they were in a deep belief in the value of the Games, and with the certainty that hosting them would boost national development efforts. With firm, unyielding commitment, the groundwork was already being laid on a path that, with each bid, was taking on an ever more clearly defined direction.

Rio de Janeiro's next attempt was to host the 2004 Olympic and Paralympic Games, but again it did not pass the initial selection phase. The Committee's General Assembly made a strategic decision to focus on a Rio bid for the 2007 Pan and Parapan American Games, with a commitment to making it the biggest and best such games ever held. Competitors and managers were determined to work towards ensuring that the cream of Brazilian athletes would compete on home soil, at a truly impressive event in state-of-the-art arenas. At the same time, Rio prepared its bid for the 2012 Games, in which the city was up against stiff competition. Despite the acknowledged quality of its bid, it was eliminated from the Candidate City shortlist.

Rio's 2004 and 2012 bids were part of an ongoing process in which the city's positive points were strengthened, and the weaker areas addressed, to provide the structure for the next Olympic and Paralympic bid. In 2007, the organisers of the Pan and Parapan American Games exceeded all expectations, delivering the best edition in these games' history. The capacity to stage and promote a major sporting event had been proven, and recognition for all the effort expended did not take long to arrive: on 2 October 2009, after a hard-fought campaign, Rio de Janeiro won the right to host the 2016 Olympic and Paralympic Games, the first to be held on South American soil.

Rio 2016

THE PARALYMPIC GAMES IN BRIEF

SPORTS:

22

DISCIPLINES:

23

MEDAL EVENTS:

528

ATHLETES:

4,350

COMPETITION VENUES:

22

DAYS OF COMPETITION:

11

COMPETITION SESSIONS:

318

OLYMPIC VILLAGE OFFICIAL

OPENING:

31 August 2016

OPENING CEREMONY:

7 September 2016

CLOSING CEREMONY:

18 September 2016

COMPETITION VENUES

A total of 22 competition venues, across four zones in Rio de Janeiro, will be used for the Paralympic Games.

Barra zone

The Barra zone will be the heart of the Rio 2016 Paralympic Games. Located in Zona Oeste (West zone), the area will be a beautiful setting for the competitions. Surrounded by lagoons, mountains and parks, this neighbourhood's idyllic natural setting will be home to the athletes, as well as welcome thousands of spectators and Games visitors. The Paralympic Village, Rio Olympic Park, Riocentro, IBC/MPC and Barra Media Accommodation Villages are all located in the Barra zone. Barra will house 12 competition venues, with 13 disciplines taking place.

Olympic Park:

CARIOCA ARENA 1:

Wheelchair Basketball,
Wheelchair Rugby

CARIOCA ARENA 2:

Boccia

CARIOCA ARENA 3:

Judo

FUTURE ARENA:

Goalball

OLYMPIC AQUATICS STADIUM:

Swimming

OLYMPIC TENNIS CENTRE:

Wheelchair Tennis, Football 5-a-side

RIO OLYMPIC VELODROME:

Cycling (Track)

RIO OLYMPIC ARENA:

Wheelchair Basketball

Other venues in the Barra zone:

PONTAL:

Cycling (Road)

RIOCENTRO - PAVILION 2:

Powerlifting

RIOCENTRO - PAVILION 3:

Table Tennis

RIOCENTRO - PAVILION 6:

Sitting Volleyball

Copacabana zone

Copacabana is one of the city's most famous neighbourhoods. Located in Rio de Janeiro's *Zona Sul*, or southern area, it boasts a beautiful, crescent-shaped beach that stretches more than four kilometres and is one of the most eye-catching images in the city. On Sundays, the lanes of *Avenida Atlântica* — the beachfront avenue — are closed to cars, so that the *carioca* population and visitors can enjoy the pleasant promenade atmosphere. Families and people of all ages may practise sport, swim in the ocean or simply relax: this is the Copacabana spirit. With its world-famous beaches, beautiful mountains and globally recognisable landmarks, including Sugarloaf and Corcovado, the Copacabana zone will be the perfect setting for the road competitions. With a population of nearly two million people, the events will certainly benefit from an authentically energetic *carioca* vibe. Copacabana will house three (3) competition venues, with five (5) sports taking place.

FORT COPACABANA:

Athletics (Marathon), Triathlon

LAGOA STADIUM:

Canoe (Sprint), Rowing

MARINA DA GLÓRIA:

Sailing

Deodoro zone

Located in the western part of Rio, the Deodoro zone is connected to the city centre and beyond by train lines. Venue construction for the Rio 2007 Pan and Parapan American Games resulted in an increase in the number of youngsters practising sport, and it is anticipated that this level of participation will increase further with the opening of new venues for the Rio 2016 Games. Deodoro will house four (4) competition venues, with four (4) sports taking place.

DEODORO STADIUM:

Football 7-a-side

OLYMPIC EQUESTRIAN CENTRE:

Equestrian (Dressage)

OLYMPIC SHOOTING CENTRE:

Shooting

YOUTH ARENA:

Wheelchair Fencing

Maracanã zone

The Maracanã zone includes two of Rio's most iconic venues: Maracanã and the Sambódromo, in addition to the Olympic Stadium, built for the Rio 2007 Pan and Parapan American Games, and nicknamed "Engenhão", after the Engenho de Dentro neighbourhood in which it is located. The zone, though part of *Zona Norte*, the northern area, is located close to the city centre. Hundreds of people visit the Maracanã complex every day, where they take advantage of its spaces for physical exercise, such as walking and jogging. Maracanã will host the Opening and Closing ceremonies of the Paralympic Games. The Archery competition will take place in the Sambódromo, while the Olympic Stadium will be home to Athletics. In total, the Maracanã zone will house three (3) Paralympic venues, with two (2) sports taking place.

MARACANÃ:

Opening and Closing Ceremonies

OLYMPIC STADIUM:

Athletics

SAMBÓDROMO:

Archery

Aquece Rio

Aquece Rio ('Rio Warms Up') is the test event programme for the Paralympic Games. The test events organised by Rio 2016 will be under the banner of the Aquece Rio series, while others will be staged by the respective International Sports Federations or Brazilian Federations.

In total, 45 test events will have been staged when the programme, which finishes in May 2016, is completed.

The programme will include 34 Olympic, six Paralympic and four joint Olympic and Paralympic test events. More than 7,700 athletes will get a taste of the host city and around 16,000 volunteers will participate in the test events, which will take place across 156 days of competition in total.

There will be three clusters of events, the first between July and October 2015, focusing on outdoor events to provide athletes with the same climatic conditions that can be expected at Games time. The second, from November 2015 to February 2016, will be more focused on indoor events, while the last, between March and May 2016, will allow preparations to be finalised.

Just before the one-year-to-go mark, the International Volleyball Federation (FIVB) organised the first 2015 test event, with the FIVB World League Finals taking place from 15 to 19 July in the Maracanãzinho, followed by the Olympic and Paralympic Triathlon event in Copacabana on 1 and 2 August; the World Rowing Junior Championships at Lagoa Rodrigo de Freitas, from 5 to 9 August; and the Equestrian event at the Olympic Equestrian Centre in Deodoro from 6 to 9 August.

The events provide an important opportunity to test the competition areas and results systems, as well as integrating all the relevant stakeholders and training the team of people who will be responsible for running the events during the Games.

For more details about the test events schedule, please visit www.aquecerio.com/en.

Celebra

Celebra, the Rio 2016 culture programme, will consist of a great celebration of Brazilian and international culture, mainly through free events to be held in public spaces, aiming to expand access to culture and incorporate it into day-to-day city life. Besides interactive installations encouraging engagement with the Rio 2016 Games, there will be a strong artistic programme, emphasising proponents of national and international culture.

The Celebra programme will embody Brazilian history and take it to the streets like never before. Access to culture, in the broadest sense, is at the heart of the programme, which is divided into six segments: literature, dance, music, visual arts, performing arts and everyday life.

After the Games

The Rio 2016 Games will be a catalyst for change in Rio de Janeiro and Brazil, leaving a positive transformation and lasting legacy not only in terms of sport, but also for society, the economy, urban infrastructure and environment. More details about Rio 2016's legacy can be found on the Rio Exchange.



COMPETITION

Equestrian at the Paralympic Games

The history of Equestrian sport dates back more than 2,000 years, when the Greeks introduced dressage training to prepare their horses for war. It continued to develop as a military exercise through the Middle Ages, with the three-day event including dressage, cross-country and jumping tests designed to reflect the range of challenges horses faced in the army.

Athletes with an impairment have long taken part in equestrian activities, originally as a means of rehabilitation and recreation. The discipline of Para-Equestrian Dressage developed in the 1970s, with the first events held in Great Britain and Scandinavia. Equestrian events have been a permanent part of the Paralympic programme since Atlanta in 1996.

KEY PERSONNEL

International Equestrian Federation (FEI)

Technical Delegate

Amanda Bond (GBR)

Rio 2016 competition management

Equestrian Manager

Ataíde Pereira (BRA)

Equestrian Services Manager

Tatiana Gutierrez (BRA)

Dressage Manager

Stephen Renouard (GBR)

Veterinary Services Manager

Juliana Freitas (BRA)

Stable Manager

Martin Atock (IRL)

Ataíde Pereira

Equestrian Manager, Rio 2016



As an officer in the Brazilian Army, Ataíde has been in charge of the Army's Equestrian School twice and had the opportunity of organising several events of the three Olympic disciplines. Before becoming a FEI technical delegate and course designer for Eventing, he competed as an athlete in Eventing, Dressage and Jumping events. As an assistant technical delegate, he took part in several international events, such as the Sydney 2000 and London 2012 Olympic Games and the FEI World Equestrian Games 2014, in France.

For details of how to contact the IPC, Rio 2016, FEI and CBH, see [pp35-37](#).

The Equestrian competition

The Equestrian competition at the Rio 2016 Paralympic Games will be held from Sunday 11 September to Friday 16 September at the Olympic Equestrian Centre. The competition will consist of 11 medal events, summarised below:

| MEDAL EVENTS (11) |
|---|
| Team — open |
| Championship Test: Individual — Grade Ia |
| Championship Test: Individual — Grade Ib |
| Championship Test: Individual — Grade II |
| Championship Test: Individual — Grade III |
| Championship Test: Individual — Grade IV |
| Freestyle Test: Individual — Grade Ia |
| Freestyle Test: Individual — Grade Ib |
| Freestyle Test: Individual — Grade II |
| Freestyle Test: Individual — Grade III |
| Freestyle Test: Individual — Grade IV |

A total of 78 athletes may take part in the Equestrian competition. This figure comprises 71 places, plus four (4) places allocated to the host country and three (3) bipartite commission places. For details of the qualification requirements, see [32](#)

Competition format

The Equestrian competition will include five grades — Ia, Ib, II, III and IV — and consists of a Team Test, an Individual Championship Test and an Individual Freestyle Test.

For the Team event, teams will consist of three (3) to four (4) athletes from the same NPC and must include at least one (1) grade Ia athlete, one (1) grade Ib athlete or one (1) grade II athlete. Teams may not consist of more than two (2) athletes of a single grade. The result of the Team event will be determined by adding together each athlete's percentage in the Team event and the Individual Championship. The combined results of the top three (3) athletes in each team will determine the team score. The team with the highest score will be the winner.

In the Team event, which forms a preliminary round for the Team championship and will be held on 11 and 12 September 2016, each grade competes separately. Individuals who are not members of a team must also participate in the Team event, but their score obtained in this competition will not count towards a medal. Each rider and horse will perform a series of pre-determined movements, which will differ by grade and ability. Grades Ia, Ib and II will perform these movements in an area 20m x 40m, whereas the arena for Grade III and IV will be 20m x 60m. The field of play will be surrounded by a low rail, along which eight (8) (grades Ia, Ib & II) or 12 (grades III & IV) lettered markers will be placed symmetrically, indicating where movements are to start and finish, and where changes of pace or lead are to occur.

The Individual Championship Test will be the final round of the Team event and will also determine the medals for the Individual Championship. It will follow the same format as the Team event, but with a different series of pre-determined movements.

The Individual Freestyle Test will determine the medals for the Freestyle championship. It differs in format from the other tests: while the athlete is required to include certain mandatory movements, the form and manner of presentation is determined by the athlete, who may also choose their own music. The Individual Freestyle competition is only open to the best one-third (1/3) of the athlete/horse combinations per grade of the total number of athletes (based on the total result of the Team and Individual Tests), provided they have reached a minimum score of 58 per cent as an average of the Team and Individual Tests. Where one-third (1/3) of the class is less than seven (7) athletes, then seven (7) will be allowed to compete.

SCORING

A panel of five (5) judges around the arena will assess the movements, awarding each movement with a mark from zero (0) to 10 in half-point increments. There will also be collective marks awarded for the overall performance. The judges' scores will be totalled and converted to a percentage, and the rider with the highest percentage will be declared the winner.

WEATHER

Rio de Janeiro as a whole benefits from a mild to warm climate during the winter month of September. Based on statistics from recent years, teams can expect an average daily high of around 22-23°C (72-73°F) in the Deodoro zone. On average, relative humidity ranges from a minimum of around 70 per cent to a maximum of around 80 per cent during this period. The average monthly rainfall during September is 51 millimetres; the prevailing winds are from the south-east and the north-east.

The rules

The Equestrian competition will be held in accordance with the editions of the following documents that are in force at the time of the Paralympic Games:

FEI PARA-EQUESTRIAN DRESSAGE RULES

(3rd edition, effective 1 January 2011, including modifications for 1 January 2016)
(available at www.fei.org)

FEI PARA-EQUESTRIAN CLASSIFICATION MANUAL

(available at www.fei.org)

FEI REGULATIONS FOR EQUESTRIAN EVENTS AT THE PARALYMPIC GAMES, 2ND EDITION

(available at www.fei.org)

THE IPC HANDBOOK

(available at www.paralympic.org/the-ipc/handbook)

The FEI, working with Rio 2016 competition management, will be responsible for the technical control and direction of the Equestrian competition at the Rio 2016 Paralympic Games.

CLOTHING AND EQUIPMENT

Clothing and equipment used by athletes and other participants in the Equestrian competitions at the Paralympic Games must comply with the documents listed below:

FEI PARA-EQUESTRIAN DRESSAGE RULES

(3rd edition, effective 1 January 2011, including modifications for 1 January 2016)

(available at www.fei.org)

FEI REGULATIONS FOR EQUESTRIAN EVENTS AT THE PARALYMPIC GAMES, 2ND EDITION

(available at www.fei.org)

THE IPC HANDBOOK

(available at www.paralympic.org)

THE IPC MANUFACTURER IDENTIFICATION GUIDELINES FOR THE 2016 RIO PARALYMPIC GAMES

(available at www.paralympic.org/the-ipc/handbook)

Transportation of horses

Peden Bloodstock GmbH has been appointed as the equine shipping agent for the Rio 2016 Games. The logistics operator will coordinate the international transport of all horses (import and export) and also the ground transport from the port of entry (GIG) to the venue, and from the venue back to the port of entry. Existing statutory regulations apply to the policies for the importation of animals into Brazil. NPCs should refer to the Equestrian Freight Manual, available on the Rio Exchange (<https://theexchange.rio2016.com>), for comprehensive information; however, these policies may alter if required by the Brazilian Government.

Veterinary and farrier services

Veterinary services at the Olympic Equestrian Centre will be staffed by recognised veterinary specialists and delivered at a purpose-built veterinary clinic with a hospital for on-site emergency surgery. A veterinary dispensing pharmaceutical services, clinical pathology laboratory services and diagnostic imaging service with digital radiography and ultrasonography will be available on site. The clinic will provide 24-hour operations the entire time that horses are on site, and veterinarians will cover the training arenas and FOP when they are open. In addition, a full farrier service will be available on site. The service will include a fully stocked forge and will be available for use by team farriers on an appointment basis.

Equestrian competition schedule

| | | |
|--|---------------|---|
| SATURDAY 10 SEPTEMBER 2016 (DAY 3), OLYMPIC EQUESTRIAN CENTRE | | |
| 10.00 - 11.35 | | First horse inspection |
| SUNDAY 11 SEPTEMBER 2016 (DAY 4), OLYMPIC EQUESTRIAN CENTRE | | |
| EQ01 10.00 - 16.55 | 10.00 - 12.51 | Team Test — Grade III |
| | 14.00 - 16.51 | Team Test — Grade Ib |
| MONDAY 12 AUGUST 2016 (DAY 5), OLYMPIC EQUESTRIAN CENTRE | | |
| EQ02 10.00 - 16.45 | 10.00 - 12.04 | Team Test — Grade IV |
| | 14.00 - 16.42 | Team Test — Grade Ia |
| TUESDAY 13 AUGUST 2016 (DAY 6), OLYMPIC EQUESTRIAN CENTRE | | |
| EQ03 10.00 - 17.25 | 10.00 - 12.42 | Team Test — Grade II |
| | 14.00 - 16.51 | Individual Championship Test — Grade III |
| | 17.05 - 17.25 | Individual Championship Test — Grade III - victory ceremony |
| WEDNESDAY 14 AUGUST 2016 (DAY 7), OLYMPIC EQUESTRIAN CENTRE | | |
| EQ04 10.00 - 17.20 | 10.00 - 12.04 | Individual Championship Test — Grade IV |
| | 12.20 - 12.35 | Individual Championship Test — Grade IV — victory ceremony |
| | 14.00 - 16.51 | Individual Championship Test — Grade Ib |
| | 17.05 - 17.20 | Individual Championship Test — Grade Ib — victory ceremony |
| THURSDAY 15 AUGUST 2016 (DAY 8), OLYMPIC EQUESTRIAN CENTRE | | |
| EQ05 10.00 - 17.10 | 10.00 - 12.42 | Individual Championship Test — Grade II |
| | 13.00 - 13.15 | Individual Championship Test — Grade II — victory ceremony |
| | 14.00 - 16.42 | Individual Championship Test — Grade Ia |
| | 16.55 - 17.10 | Individual Championship Test — Grade Ia — victory ceremony |

| FRIDAY 16 AUGUST 2016 (DAY 9) | | |
|-------------------------------|---------------|--|
| EQ06 9.00 - 17.16 | 9.00 - 9.56 | Individual Freestyle Test — Grade III |
| | 10.10 - 11.16 | Individual Freestyle Test — Grade IV |
| | 11.16 - 11.31 | Individual Freestyle Test — Grade III — victory ceremony |
| | 11.31 - 11.46 | Individual Freestyle Test — Grade IV — victory ceremony |
| | 13.00 - 13.56 | Individual Freestyle Test — Grade Ib |
| | 14.10 - 15.06 | Individual Freestyle Test — Grade Ia |
| | 15.20 - 16.16 | Individual Freestyle Test — Grade II |
| | 16.16 - 16.31 | Individual Freestyle Test — Grade Ia — victory ceremony |
| | 16.31 - 16.46 | Individual Freestyle Test — Grade II — victory ceremony |
| | 16.46 - 17.01 | Individual Freestyle Test — Grade Ib — victory ceremony |
| | 17.01 - 17.16 | Team — victory ceremony |



COMPETITION AND TRAINING VENUE

Competition venue

OLYMPIC EQUESTRIAN CENTRE

Av. Duque de Caxias, 2660
Vila Militar, Deodoro

The Equestrian competition at the Rio 2016 Paralympic Games will be held at the Olympic Equestrian Centre, located in the Military Village in the Deodoro zone. It comprises the Army Equestrian School and part of the Andrade Neves Regiment, both very traditional Army units. The Complex has around one million square meters. The venue was renovated for the Rio 2007 Pan and Parapan American Games and hosted the 5th World Military Games in 2011.

The competition venue will be open from 11 August to 16 August 2016. The fields of play for all events will be presented in accordance with FEI rules.

FACILITIES

Facilities at the competition venue will include:

- grooms accommodations
- changing rooms and showers
- lounges for athletes
- catering services
- internet access
- stabling
- training areas
- covered arena
- veterinary clinic
- forge
- mixed zone, where accredited media may conduct interviews with athletes after competition, and a press room
- Sport Information Desk (for details, see [p30](#))
- medical facilities (for details, see [p29](#))
- doping control stations for athletes and horses (for details, see [p30](#))

Training venue

OLYMPIC EQUESTRIAN CENTRE

Av. Duque de Caxias, 2660
Vila Militar, Deodoro

Training for the Equestrian competition will also take place at the Olympic Equestrian Centre, the competition venue.

The venue will be open for training from 31 August, the day the Paralympic Village opens, until Friday 16 September.

The training facilities at Olympic Equestrian Centre will include:

- grooms accommodations
- changing rooms and showers
- lounges for athletes
- catering services
- internet access
- stabling
- training areas
- covered arena
- veterinary clinic
- forge
- sport equipment storage
- medical facilities



GENERAL INFORMATION

Accreditation

Accreditation is the process of identifying individuals and their roles at the Paralympic Games, whilst ensuring that they are granted appropriate access to fulfil their roles. Accreditation also ensures that all Games participants are granted entry into Brazil for the Games. A basic summary of the Accreditation process is given below; full details will be provided in the Accreditation application materials that will be available on the Rio Exchange in January 2016.

ACCREDITATION TIMELINE

The deadline for accreditation applications is 23:59 Rio de Janeiro time (GMT-3) on 27 May 2016. A complete accreditation application consists of a completed accreditation application and an acceptable photograph.

NPCs are responsible for submitting all accreditation applications directly to Rio 2016. To ensure compliance with data-protection principles, all applications should be submitted through the eAccreditation (ECR) module of the Games Management System.

Eligibility Code Forms

As required by the IPC Handbook, all individuals submitted in the following NPC accreditation categories must complete an Eligibility Code Form (ECF), acknowledging their compliance with IPC and IF rules regarding Games participation:

- Aa – athletes
- Ab – athlete competition partners
- Ac – Chefs de Mission, Deputy Chefs de Mission, Paralympic Attachés
- Am, Ao and As (primary and additional team officials)
- P – personal coaches and training partners
- NPC horse owners

Without a signed form, an athlete will not be able to compete and team officials will not be eligible for accreditation at the Rio 2016 Paralympic Games.

The following are key accreditation dates for athletes, team officials and dignitaries:

| DATE | APPLIES TO | ACTIVITY |
|--------------|------------|--|
| January 2016 | ALL | Rio 2016 publishes the NPC Accreditation Manual, Sport Entries Manual and associated materials on the Rio Exchange |
| 27 May 2016 | ALL | Deadline for NPCs to submit all athlete, team official and dignitary (Aa, Ab, Ac, Ao, Am, As, P, NPC, NPC**) accreditation applications to Rio 2016 through the ECR module |
| July 2016 | ALL | Rio 2016 produces and dispatches Pre-Valid Cards (including those for NPC accredited press) to NPCs |

| | | |
|----------------|----------|--|
| 15 July 2016 | ATHLETES | Sport Entries (SEQ) module opens for sport entries submission |
| 15 August 2016 | ATHLETES | Deadline for NPCs to submit sport entries to Rio 2016 through the SEQ module |

PRE-VALID CARDS (PVCs)

Rio 2016 will produce Pre-Valid Cards for all NPC delegates whose attendance at the Games has been confirmed during the Pre-DRMs. The production and distribution process will commence as soon as the Pre-DRMs have been completed.

Holders of Pre-Valid Cards (PVCs) or Paralympic Identity and Accreditation Cards (PIAC — the PVC once it has been validated) may enter Brazil multiple times from 5 July 2016 until 28 October 2016 upon presentation of their card and a valid travel document, such as a passport or national ID for Mercosur nationals (passport holders of Brazil, Argentina, Paraguay, Uruguay and Venezuela) without requiring a separate entry visa. Rio 2016 will work with airlines and immigration services worldwide to ensure that all necessary authorities are aware that the PVC can be used as a visa waiver to travel to Brazil for the Games.

Note that the PVC will not act as a visa waiver or transit visa for any other country. Individuals transiting through another country are responsible for obtaining the necessary entry/transit documentation.

Individuals using their PVC or validated PIAC as an entry document must ensure that their travel document is valid beyond 31 December 2016 and that it is the same document that was provided to Rio 2016 during the accreditation application.

ACCREDITATION CARD VALIDATION

Individuals arriving in Brazil through Rio de Janeiro's Tom Jobim International Airport (GIG) will be able to validate their PVCs at the airport, provided that their NPC's DRM has been completed. Validation desks will be located at both terminals after immigration and before baggage claim.

Individuals arriving through other ports of entry, including Santos Dumont Domestic Airport, should proceed to the appropriate main accreditation centre to complete the accreditation validation process.

Each individual must attend an accreditation facility in person to complete the validation process. Individuals should bring their PVC and the valid identity document that was provided to Rio 2016 in the accreditation application.

Accreditation facilities

Rio 2016's Accreditation team will be present at all competition venues, as well as operating the main accreditation centres in the relevant locations for each client group.

The table below lists all accreditation facilities and the services provided:

| FACILITY | ZONE | PRIMARY POPULATION | SERVICE TYPE | SERVICE START DATE |
|---|-----------|---|---|---|
| GIG – Tom Jobim International Airport (Terminals 1 and 2) | Maracanã | All | Validation | 5 July 2016 (PIAC validation commences on 31 August 2016) |
| PLV – Paralympic Village (Welcome Centre) | Barra | Athletes and team officials | Full service | 31 August 2016 |
| PFH – Paralympic Family Hotel | Barra | All other Games Family categories, including NPC Presidents and Secretaries General, NPC dignitaries and guests | Full service | TBC |
| MPC/IBC – Media Accreditation Centre | Barra | Press and broadcast | Full service | 5 July 2016 (PIAC validation commences 22 August 2016) |
| Deodoro Main Accreditation Centre | Deodoro | All | Full service | TBC* |
| Venue Accreditation Offices (VAOs) at competition venues only | All zones | All | Validation; problem resolution, including reissuing lost/stolen cards | TBC* |

*To be confirmed in the Rio 2016 NPC Accreditation Manual.

Tickets and accredited seating

GAMES-TIME TICKET SALES

At Games time, available tickets may be purchased at several locations, as detailed below:

- Paralympic Village (ticket box office at the Village Plaza)
- Competition venues (ticket box offices will operate on competition days at the relevant venues)

COMPLIMENTARY SPORT TICKETS

Athletes and officials may access the athletes' stand during competition for their own discipline(s) without a ticket, upon presentation of their accreditation. In order to watch competitions at venues in disciplines other than their own, athletes and officials will require a ticket. A limited number of complimentary Different Discipline Athlete (DDA) tickets are available for all sport disciplines.

NPC Chefs de Mission may request complimentary sport tickets for their delegation members a day before the event through an electronic ticket request system. Complimentary tickets will be

limited in number, and demand is expected to exceed supply for many venues. NPC Relations and Services will allocate tickets according to availability, delegation size and NPC participation in the relevant sport. Chefs de Mission, or their ticketing proxy card holders, will be able to collect tickets from the NPC Services Centre in the Paralympic Village the evening before the sessions.

Accommodation

During the Rio 2016 Paralympic Games, the Paralympic Village will accommodate around 8,000 athletes and team officials. In addition, grooms will reside in specific grooms' accommodation. A brief summary of the Paralympic Village follows below. For details of medical services at the Paralympic Village and other accommodations, see [p29](#).

PARALYMPIC VILLAGE

The Paralympic Village is located in the Barra venue zone, in the south-west of the city, in close proximity to Riocentro and the Barra Olympic Park. The Village will officially open at 8.00am on 31 August 2016 and close at 6.00pm on 21 September 2016.

The Paralympic Village has a plaza and a residential zone. The residential zone is restricted to residents. It contains the accommodation, recreational and catering facilities, as well as transport services to competition and training venues. The Village Plaza and residential zones will be separated by internal fencing and access control. Guests may enter the residential zone from the Village Plaza only if accompanied at all times by Village residents with 'R' on their accreditation.

Beginning at 8.00am on 31 August — and only once the NPC has completed their DRM and Inspection & Inventory (I&I) — will the athletes and team officials be able to access the Paralympic Village.

Accommodation

Athletes and officials will be accommodated in five condominiums which are made up of 21 buildings with 17 floors each. The apartments have between two and five bedrooms with up to seven beds. All social spaces will have soft furnishings (sofa and beanbags), a coffee table, a television with a live feed from the venues and free wireless internet (Wi-Fi) access.

Resident centres and services

There will be a resident centre in each of the five condominiums, with two centres open 24 hours a day and three operating from 7.00am until 10.00pm. Each resident centre will provide a front desk hotel-like service that will assist with the resolution of issues relating to accommodation services in the Village, housekeeping requests and maintenance issues. They will also provide a concierge service, Info+ terminals, internet access, a lounge and meeting facilities.

The Paralympic Village will provide a multi-faith centre for worship and meditation. It will be staffed by representatives of the following religions: Buddhism, Christianity, Hinduism, Islam and Judaism. It is open to people of all religions and faiths.

Food services

The Main Dining Hall will be located in the residential zone, adjacent to the transport mall, and will operate on a 24-hour basis from 31 August until 21 September 2016. A menu, rotated on an eight-day cycle, will provide a wide range of meal choices and cater to all nutritional needs. A McDonald's restaurant and McCafé will also be located in the Main Dining Hall. Additional dining

options in the Village will include a 'grab-and-go' station at every condominium, an outdoor casual dining area and the Plaza Café.

From 31 August until 18 September 2016, Athlete Venue Meals (AVM) will be available for athletes and officials who will be away from the Village for competition or training for more than four hours. AVMs must be ordered from the SIC at the Paralympic Village 48 hours in advance. Meals will be prepared at the venue to be collected from the Athletes' Lounge. These packed meals will include a sandwich, salad, piece of fruit and a sweet item.

Resident entertainment and recreation

An Athletes' Lounge, music area and video game room will be available to Paralympic Village residents for relaxation at the Paralympic Village Entertainment Centre. An internet lounge will be located in the Village Plaza and will be open 24 hours a day from 31 August until 21 September.

Athlete fitness and sport recreation

The Paralympic Village will contain a gym with a good selection of cardiovascular equipment, resistance machines and free weights, as well as space for stretching and warming up/down.

Each condominium will have a dedicated recreational shallow swimming pool, which will be available for use by residents from 9.00am until 5.00pm daily.

The Paralympic Village will have an area with courts for recreational sports activities. Note that equipment will not be provided.

Residents will also be able to use a transport service from the Athlete Transport Mall to the Paralympic Village Beach, which is located in the Barra zone. Lounge chairs and beach umbrellas will be available free of charge to athletes and team officials.

Village Plaza

The Village Plaza is a place for residents and guests to purchase retail items and souvenirs, as well as providing essential support services. It is also an area where Paralympic Village residents and their guests can meet. Some shops and services within the Paralympic Village Plaza will operate on a user-pay basis, while others are free of charge for athletes and officials. Retail outlets and services will include a bank, postal services, phone centre, internet lounge, dry cleaning, hair salon, a general store and a ticket office. Team Welcome Ceremonies will also take place in the Village Plaza.

Repair services at the Paralympic Village

During the Rio 2016 Paralympic Games, Ottobock will be the official provider for wheelchair, orthotic and prosthetic repair services for athletes, NPC Team Officials, IF Games Officials and members of the Paralympic Family.

Repairs will be conducted free of charge on damages to wheelchairs, orthotics or prosthesis that, if not carried out, would either prevent athletes from competing in their events or affect delegates from achieving their usual level of independent daily living.

Repair services will be available in the residential zone of the Paralympic Village (main workshop) from 28 August until 21 September 2016. The regular operating hours of the repair service will be from 7.00am until 11.00pm; however, an emergency phone number will also be available for

repairs needed outside these hours. This phone number will be communicated to NPCs in the Team Leaders' Guide.

Transport

During the Rio 2016 Paralympic Games, the TA (Transport for Athletes) system will provide transport services for athletes and team officials (Aa, Ab, Ac, Ao and P alternate athletes) and their accompanying luggage and personal sport equipment from 31 August until 21 September 2016. The TA bus system will provide the following transport services:

- arrival and departure services from/to the airports in Rio de Janeiro to/from the Paralympic Village Welcome Centre
- transport between the Paralympic Village and official competition and training venues
- Internal Village Transport Service (IVTS) operating inside the Paralympic Village
- Different Discipline Spectating Athletes (DDA) services
- ceremonies services
- additional services to the Sugar Loaf Mountain, Metropolitan Shopping Mall and Barra beach

TA TRAINING AND COMPETITION SERVICES

Transport services for athletes and team officials for training and competition have been planned, and TA system vehicles will vary in size, seating capacity and model.

Regularly scheduled transport services will connect athletes to designated training venues. The service will commence on 31 August 2016 and will continue until the close of each sport's individual training session.

On competition days, the TA service will begin approximately two or three hours prior to competition starting, with the last bus leaving the venue a maximum of two hours post-competition.

INTERNAL VILLAGE TRANSPORT SERVICE

A daily Internal Village Transport Service (IVTS) shuttle will operate inside the Paralympic Village. The IVTS will circulate in a clockwise direction, connecting key locations, including the Welcome Centre, Main Dining Hall, Athlete Transport Mall and residential zone. This service will operate 24 hours a day from 28 August until 21 September 2016. Frequency will vary depending on the time of day.

NPC DEDICATED VEHICLES

The number of dedicated vehicles allocated to each NPC will be confirmed at the Delegation Registration Meeting (DRM) and will be based on the NPC delegation size. The vehicles will be a mix of five-seat and 14-seat vehicles.

Equipment transfer

Rio 2016 Logistics will operate a scheduled service for the transfer of athlete sport equipment

between the Paralympic Village and competition and training venues (non-competition venues are not included) from 31 August to 20 September 2016. NOCs can request assistance with inter-venue transfers from the Logistics desk in the NPC Services Centre in the Paralympic Village.

PUBLIC TRANSPORT

A number of public transport options are available to get around in Rio:

- Bus Rapid Transit system (BRT)
- Subway (Metrô Rio)
- Train (Supervia)
- Light Rail Train (LRT)
- Urban bus

Information regarding the free-of-charge public transport options for accredited individuals in Rio de Janeiro will be made available in the Team Leaders' Guide.

Medical services

Public health services, including disease surveillance, communicable disease control and health protection (such as food, water and air quality) will be in place throughout Brazil during the Games.

Local hospitals include 24-hour emergency specialist services, and tourist clinics are also available around the city. Local pharmacies can be found in all neighbourhoods, and some are open 24 hours a day.

There are no vaccination requirements for entering Brazil, but NPCs are advised to consult their local physician prior to travelling to Brazil to ensure that all routine vaccinations are up to date.

MALARIA AND DENGUE FEVER

Cases of dengue fever and malaria have been documented across all regions of Brazil. Whilst cases of malaria in Rio de Janeiro are extremely rare, major cities such as Brasília and Belo Horizonte have had a greater prevalence. NPCs are therefore advised to take the necessary precautions to protect themselves against mosquito bites.

Yellow fever

The yellow fever vaccine is not a requirement for entry into Brazil; however, in the more remote areas, yellow fever has been documented and, therefore, it is recommended that NPCs take the necessary precautions.

It should also be noted that even though Brazil does not require the yellow fever vaccine for entry, delegates are advised to verify with their airline if the vaccine is a requirement of their destination upon leaving Brazil, or any transiting countries throughout the journey.

A basic summary of medical services at the Games is given below; full details will be provided in the Rio 2016 NPC Healthcare Guide, which will be published in April 2016.

Games-time medical services

The Polyclinic will be located in the residential zone of the Paralympic Village and will be the main

treatment provider for urgent and necessary services for athletes and NPC team officials during the Games. The Polyclinic will be open with limited services from 28 to 30 August, and then fully operational from 31 August until 21 September 2016.

Services will be offered between 7.00am and 11.00pm, seven days a week, with an emergency services department operating 24-hours a day. Services in the Polyclinic will include:

- first aid and emergency services
- sports medicine
- dentistry
- imaging services — X-ray, ultrasound and MRI will be available on-site
- laboratory — for urine, blood and biochemical testing (some tests will be available on-site in the Polyclinic lab whilst others will be performed and sent to a laboratory outside the Paralympic Village for analysis)
- ophthalmology
- pharmacy
- physiotherapy and massage therapy (this will include treatment areas and a rehabilitation gym)
- podiatry
- primary care and specialist services — consultation rooms will be available for scheduled and on-call primary care and specialised services (such as dermatology, cardiology)
- IPC Medical & Scientific Department Offices

NPC doctors will be able to request imaging and laboratory services and discuss results with Rio 2016 medical services clinicians. Hospital referrals can only be made by Rio 2016 medical personnel. NPC doctors will be able to accompany team members to hospital and discuss management with the admitting doctor at the hospital.

The Polyclinic will have a 24-hour emergency phone number in the case emergency medical assistance is required outside the operational hours stated above.

VENUE MEDICAL SERVICES

Medical facilities will be provided at competition, training and other official venues. Athlete and spectator services will be stocked with appropriate equipment, supplies and medication, and will be staffed by experienced medical personnel. Ambulances — staffed per Brazilian legislation by one nurse, one doctor and one driver each — will be stationed at all official Rio 2016 competition and training venues, the Village Polyclinic and the main Paralympic Family Hotel.

Competition and training venues

At least one dedicated athlete medical post will be present at all official Rio 2016 competition and training venues. Each medical post, staffed by a combination of doctors, nurses, physiotherapists and massage therapists, will provide services such as first aid and emergency care to athletes, team officials and technical officials. Athlete medical posts will be equipped with essential first aid and emergency equipment.

Field-of-play response

Field of play (FOP) response teams will provide first aid and emergency services to athletes and

officials on the FOP, should such services be required. If necessary, the athlete will be retrieved from the FOP and transported to the athlete medical post, Polyclinic or designated hospital, as appropriate. The order of response on the FOP and any decision making will differ in each venue, in accordance with the rules of the respective IF.

Spectator medical services

All official Rio 2016 competition venues will have one or more spectator medical post that will provide first aid and emergency services to all other client groups, including spectators, workforce, media, sponsors and Paralympic Family. There will also be mobile medical responders circulating throughout the venue to respond to any medical situation that occurs.

PARALYMPIC FAMILY HOSPITALS

Athletes and team officials who require services beyond the capability of the Polyclinic will be transported to Vitória Hospital – Americas Medical City located in the Barra zone, near the Paralympic Village and Barra Olympic Park. Any patient suffering from a life-threatening condition that may occur at another competition or training venue located in any of the other venue zones (Copacabana, Deodoro or Maracanã) will be taken to the nearest pre-selected hospital.

Doping control

Rio 2016 is committed to delivering a world-class anti-doping programme during the Paralympic Games. In partnership with the IPC, Rio 2016's anti-doping programme will ensure that the integrity of sport is upheld, while protecting the rights and health of the athletes.

The programme will conduct testing anytime and anywhere, without prior notice, from 31 August to 18 September 2016 and will follow collection procedures consistent with the IPC Anti-Doping Code and the World Anti-Doping Code. Sample analysis will be conducted at the WADA-accredited laboratory in Rio de Janeiro.

Rio 2016 encourages NPCs to take proactive and comprehensive measures to ensure athletes, support personnel and medical staff are informed of, for example, the anti-doping rules and procedures that will be in place during the Games, the WADC Prohibited List and the importance of drug-free sport.

Sport information

SPORT INFORMATION DESKS

The Sport Information Centre (SIC) will be located in the residential zone of the Paralympic Village and will provide key sport-specific information to teams through Sport Information Desks (SIDs) dedicated to each Paralympic sport/discipline. SIDs will also be available at every competition venue. A variety of services and information will be available at the SIC, including:

- general competition-related information and sport-related communications from the Rio 2016 Sport Competition team or International Federations (IFs)

- distribution of results, draws and start lists, daily training schedules and other key competition information
- booking of Games-time training slots and allocation of training sessions at competition venues for selected sports
- transport information and scheduling of team sport buses
- Athlete Venue Meals (AVMs) bookings

The SIC will already be open on 31 August, the day the Paralympic Village officially opens, and will be open every day throughout the Games. The hours of operation will be as follows:

| DATES | HOURS OF OPERATION |
|-------------------------------|--------------------|
| 31 August – 18 September 2016 | 7.00am – 10.00pm |
| 19 – 21 September 2016 | 8.00am – 8.00pm |

Info+

Info+ is the official Games-time intranet for the Paralympic Family. It will be available in all competition and some non-competition venues from 31 August 2016 and will contain the following information:

| INFO+ CONTENT | DETAILS |
|---------------|---|
| BACKGROUND | Historical data, statistics, competition formats and rules, qualification criteria and venue descriptions |
| BIOGRAPHIES | Athlete biographies and team, coach, referee and judge profiles |
| CEREMONIES | Details about ceremonies (Opening, Closing, medals), including timings and participants |
| GAMES NEWS | Flash quotes, press conference highlights, sport previews, news articles, statistics-driven reports, media communication and IPC news |
| MEDALS | Medal standings by sport; overall medal standings; and medallists by day, sport and event |
| RECORDS | World and Paralympic records, including current records, record holders and new or equalled records |
| RESULTS | Competition results viewable by sport, date and NPC — includes entry lists, start lists and additional sport-specific reports |
| SCHEDULES | Competition and non-competition schedules, including press conferences, IPC activities and cultural activities |
| TRANSPORT | Transport schedules and maps |
| WEATHER | Real-time weather conditions and forecasts |

Info+ terminals will be available at NPC offices in the Paralympic Village. NPCs with a delegation size of 25+ (Aa, Ac, Ao) will receive additional desktop computer(s) with internet access and a myInfo+ account.

myInfo+ is the online version of Info+ and is available for anyone with an internet connection and log-in (username and password) from anywhere in the world. myInfo+ provides additional features not available on Info+, such as:

- user customisation (the ability for users to create their own schedules by selecting only those sports and events that interest them)
- news/event alerts via SMS/text message or email
- bookmarking of results, reports and other Games information
- hyperlinking to other websites, such as those of the IPC and IFs
- downloadable results books
- the ability to copy and paste information from results and news reports

Medals and diplomas

Medals and diplomas will be awarded in each event, as follows:

FIRST PLACE

A gold (silver gilt) medal, a diploma and a Paralympic medallist's pin

SECOND PLACE

A silver medal, a diploma and a Paralympic medallist's pin

THIRD PLACE

A bronze medal, a diploma and a Paralympic medallist's pin

FOURTH, FIFTH, SIXTH, SEVENTH AND EIGHTH PLACES

A diploma

Qualification and entries

Entries to the Paralympic Games are the responsibility of the National Paralympic Committees (NPCs), upon recommendations provided by their respective National Organisations and based on qualification systems defined by the International Federations (IFs) and approved by the IPC. Detailed sport-by-sport qualification systems are available and regularly updated on the IPC website:

www.paralympic.org/rio-2016/qualification

Classification

The purpose of the Paralympic sport classification system is to minimise the impact of impairment on the outcome of competition, so that the athletes who succeed in competition are those with the best anthropometry, physiology and psychology and who have enhanced them to best effect through hard training and quality coaching. To achieve this, athletes are grouped into classes according to how much their impairment impacts on their sport-specific performance.

All athletes at the Rio 2016 Paralympic Games must comply with their respective sport's eligibility criteria, as stipulated in the Rio 2016 Paralympic Games Qualification Guide. This also applies to athletes submitted by their NPCs using a Bipartite Commission application, by a Universality Wild Card (UWC) application, or as substitutes between the final entries deadline and the DRM (where applicable).

Athlete-specific classification data (sport class and sport class status) will be uploaded onto the Sport Entries system from the Classification Master Lists provided to Rio 2016 by the respective IFs by 15 June 2016, consistent with the IPC's zero-classification policy. NPCs should ensure that their athletes are classified before 15 June 2016. This will help to ensure that the online Sport Entries module is up to date, and will allow NPCs to enter their athletes into the correct events. Any changes in classification occurring after 15 June must be reported to the IPC and Rio 2016 immediately.

Further information about classification for the Rio 2016 Paralympic Games will be available in the Rio 2016 Paralympic Games Classification Guide, published in the fourth quarter of 2015.

For more information on the classification rules specific to Equestrian, see the [International Equestrian Federation's website](#).



DIRECTORY

Rio 2016 Organising Committee for the Olympic and Paralympic Games

Rio de Janeiro won the right to stage the Games of the XXXI Olympiad on 2 October 2009. The Rio 2016 Organising Committee for the Olympic and Paralympic Games (Rio 2016) is a private, not-for-profit sports association formed by the Brazilian Sports Federations, Brazilian Olympic Committee (COB) and Brazilian Paralympic Committee (CPB). It was assigned this mission by the International Olympic Committee (IOC) and International Paralympic Committee (IPC) and must follow their guidance, the Host City Contract, the Olympic Charter, the IPC Handbook, World Anti-Doping Agency (WADA) regulations and Brazilian law.

Rio 2016's key partners include the Olympic Public Authority (APO), the Olympic Public Council, the Ministry of Sport, EGP-Rio, the Municipal Olympic Company (EOM), the Brazilian Olympic Committee (COB), the Brazilian Paralympic Committee (CPB) and a variety of international and Brazilian commercial partners.

RIO 2016

Rua Ulysses Guimarães, 2016
Cidade Nova 20211-225
Rio de Janeiro - RJ
Brazil
tel: +55 21 2016 2016
URL: www.rio2016.com

President:

Carlos Arthur Nuzman

Chief Executive Officer:

Sidney Levy

Chief Operations Officer:

Leonardo Gryner

Executive Director of Sport and Paralympic Integration:

Agberto Guimarães

Sports Director:

Rodrigo Garcia

Olympic & Paralympic Village and NOC/NPC Relations & Services

Director:

Mario Cilenti

NPC Relations & Services

email: npcrelations@rio2016.com

Equestrian Manager:

Ataíde Pereira

email: apereira_sm@rio2016.com

International Paralympic Committee (IPC)

The global governing body of the Paralympic Movement, the International Paralympic Committee (IPC), organises the Paralympic Games and serves as the IF for ten sports, for which it supervises and coordinates the World Championships and other competitions. The IPC is committed to enabling Paralympic athletes to achieve sporting excellence and to developing sport opportunities for all persons with an impairment, from beginner to elite level. In addition, the IPC aims to promote the Paralympic values, which include courage, determination, inspiration and equality. Founded on 22 September 1989, the IPC is an international non-profit organisation formed by circa 170 National Paralympic Committees (NPCs) from five regions, 17 International Federations (IFs) and four impairment-specific international sports federations (IOSDs).

INTERNATIONAL PARALYMPIC COMMITTEE

Adenauerallee 212–214
53113 Bonn
Germany
tel: +49 (0)228 2097 200
fax: +49 (0)228 2097 209
email: info@paralympic.org
URL: www.paralympic.org

President:

Sir Philip Craven MBE

Chief Executive Officer:

Xavier Gonzalez

Paralympic Games Sport

& NPC Services Senior

Manager:

Jürgen Padberg

Medical and Scientific

Director:

Dr Peter Van de Vliet

Paralympic Games

Integration Director:

Thanos Kostopoulos

International Equestrian Federation (FEI)

Founded in 1921, the International Equestrian Federation (Fédération Equestre Internationale in the original French) is the international governing body for all Equestrian sports. It promotes equestrianism in all its forms and encourages the development of Equestrian disciplines throughout the world, in collaboration with 133 affiliated national federations. It also establishes regulations and approves Equestrian sport at the Paralympic level, as well as at a variety of other championships and events around the world.

INTERNATIONAL EQUESTRIAN FEDERATION

HM King Hussein I Building
Chemin de la Joliette 8
1006 Lausanne
Switzerland
tel: +41 (0)21 310 4747
fax: +41 (0)21 310 4760
email: fei@fei.org
URL: www.fei.org

President:

Ingmar De Vos

1st Vice-President:

John Madden

Secretary General:

Sabrina Zeender

Director, Eventing and

Olympic:

Catrin Norinder

2nd Vice-President:

Sheikh Khalid bin
Abdulla Al Khalifa

Confederação Brasileira de Hipismo (CBH)

The first efforts to create a governing body for Equestrian in Brazil occurred in 1935, but it was only in 1941 that the Brazilian Equestrian Confederation (Confederação Brasileira de Hipismo, CBH) was founded. The CBH is affiliated with 20 federations across the country.

CONFEDERAÇÃO BRASILEIRA DE HIPISMO

Rua Sete de Setembro, 81
Ed. Moscoso Castro, 3º andar
Centro 20050-005
Rio de Janeiro – RJ
Brazil
tel: +55 21 2277 9150
fax: +55 21 2277 9165
URL: www.cbh.org.br

President:

Luiz Roberto Giugni

Technical Director:

Edilson Alves da Rocha

Vice-President:

Ronaldo Bittencourt Filho

Secretary General:

Ronaldo Bittencourt Filho

Paralympic competition schedule by day (accurate as of the publishing of this guide on 28/8/2015)

RIO 2016 - MEDAL CHART 2.65

| VENUE | DISCIPLINE | 07 Set Wed 0 | 8 Set Thu 1 | 9 Set Fri 2 | 10 Set Sat 3 | 11 Set Sun 4 | 12 Set Mon 5 | 13 Set Tue 6 | 14 Set Wed 7 | 15 Set Thu 8 | 16 Set Fri 9 | 17 Set Sat 10 | 18 Set Sun 11 |
|--------------------------|---------------------------|--------------------|-------------------|-------------------|--------------------|--------------------|--------------------|--------------------|--------------------|--------------------|--------------------|---------------------|---------------------|
| BARRA DA TIJUCA | | | | | | | | | | | | | |
| Olympic Aquatics Stadium | Swimming | | 16 | 16 | 14 | 15 | 16 | 15 | 15 | 14 | 16 | 15 | |
| | Wheelchair Basketball | | | | | | | | | | | | |
| | Wheelchair Rugby | | | | | | | | | | | | 1 |
| Carioca Arena 2 | Boccia | | | | | | 3 | | | | 4 | | |
| Carioca Arena 3 | Judo | | 4 | 4 | 5 | | | | | | | | |
| Future Arena | Coalball | | | | | | | | | | 2 | | |
| Olympic Tennis Centre | Wheelchair Tennis | | | | | | | 1 | 1 | 2 | 2 | Spare Day | |
| | Football 5-a-Side Court 1 | | | | | | | | | | | | 1 |
| | Wheelchair Basketball | | | | | | | | | | 1 | 1 | |
| Rio Olympic Velodrome | Cycling Track TBC | | 4 | 1 | 1 | 3 | | | | | | | |
| Pontal | Cycling Road TBC | | | 4 | 4 | | | | TBC | TBC | TBC | TBC | |

Paralympic competition schedule by day

| VENUE | DISCIPLINE | 07 Set Wed 0 | 8 Set Thu 1 | 9 Set Fri 2 | 10 Set Sat 3 | 11 Set Sun 4 | 12 Set Mon 5 | 13 Set Tue 6 | 14 Set Wed 7 | 15 Set Thu 8 | 16 Set Fri 9 | 17 Set Sat 10 | 18 Set Sun 11 |
|---------------------------|-----------------------------|--------------------|-------------------|-------------------|--------------------|--------------------|--------------------|--------------------|--------------------|--------------------|--------------------|---------------------|---------------------|
| BARRA DA TIJUCA | | | | | | | | | | | | | |
| Riocentro - Pavilion 2 | Powerlifting | | 1 | 1 | 1 | 1 | 1 | 1 | 1 | | | | |
| Riocentro - Pavilion 3 | Table Tennis | | 1 | 1 | 1 | 1 | 4 | 4 | | | 2 | 2 | |
| Riocentro - Pavilion 6 | Volleyball (Sitting) TBC | | | | | 5 | 4 | 4 | | | | 1 | 1 |
| COPACABANA | | | | | | | | | | | | | |
| Fort Copacabana | Athletics Marathon TBD | | | | 3 | 3 | Spare Day | | | | | | 5 |
| Lagoa Stadium | Triathlon TBC | | | | 3 | 4 | Spare Day | | | | | | |
| Marina da Glória | Rowing TBC | | | | | | | | | | | | |
| | Canoe TBC | | | | | | | | | 6 | Spare Day | | |
| | Sailing TBC | | | | | | | | | | | 3 | |
| DEODORO | | | | | | | | | | | | | |
| Youth Arena | Wheelchair Fencing TBC | | | | | | | | | | | | |
| Olympic Equestrian Centre | Equestrian | | | | | | 2 | 4 | 4 | 2 | 2 | | |
| Olympic Shooting Centre | Shooting | | 2 | 2 | 2 | 1 | 1 | 2 | 2 | 2 | 6 | | |
| Deodoro Stadium | Football 7-a-Side | | | | | | | | | | | 1 | |
| MARACANÁ | | | | | | | | | | | | | |
| Olympic Stadium | Athletics | | 5 | 7 | 7 | 10 | 6 | 10 | 6 | 8 | 8 | 8 | 8 |
| Maracanã | Ceremony | | 5 | 13 | 9 | 9 | 8 | 9 | 8 | 11 | 8 | 17 | |
| Sambódromo | Archery | | | | | | | | | | | | |
| | Ceremony | Opening Ceremony | | | | | | | | | | | Closing Ceremony |
| | Archery | | | | | 1 | 1 | 1 | 1 | 1 | 1 | 1 | 1 |

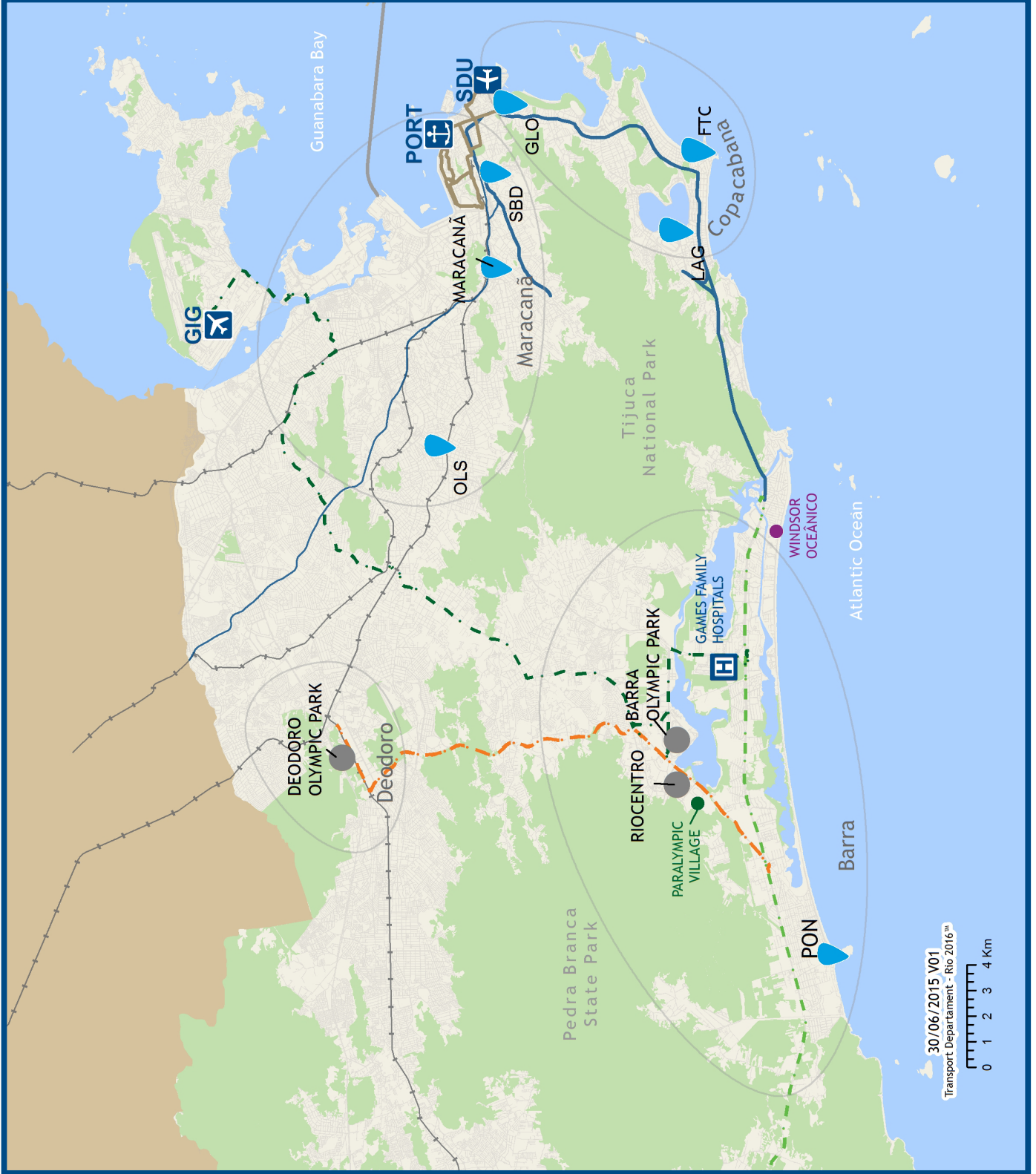


MAPS

Paralympic Games: Rio de Janeiro Overview

LEGEND

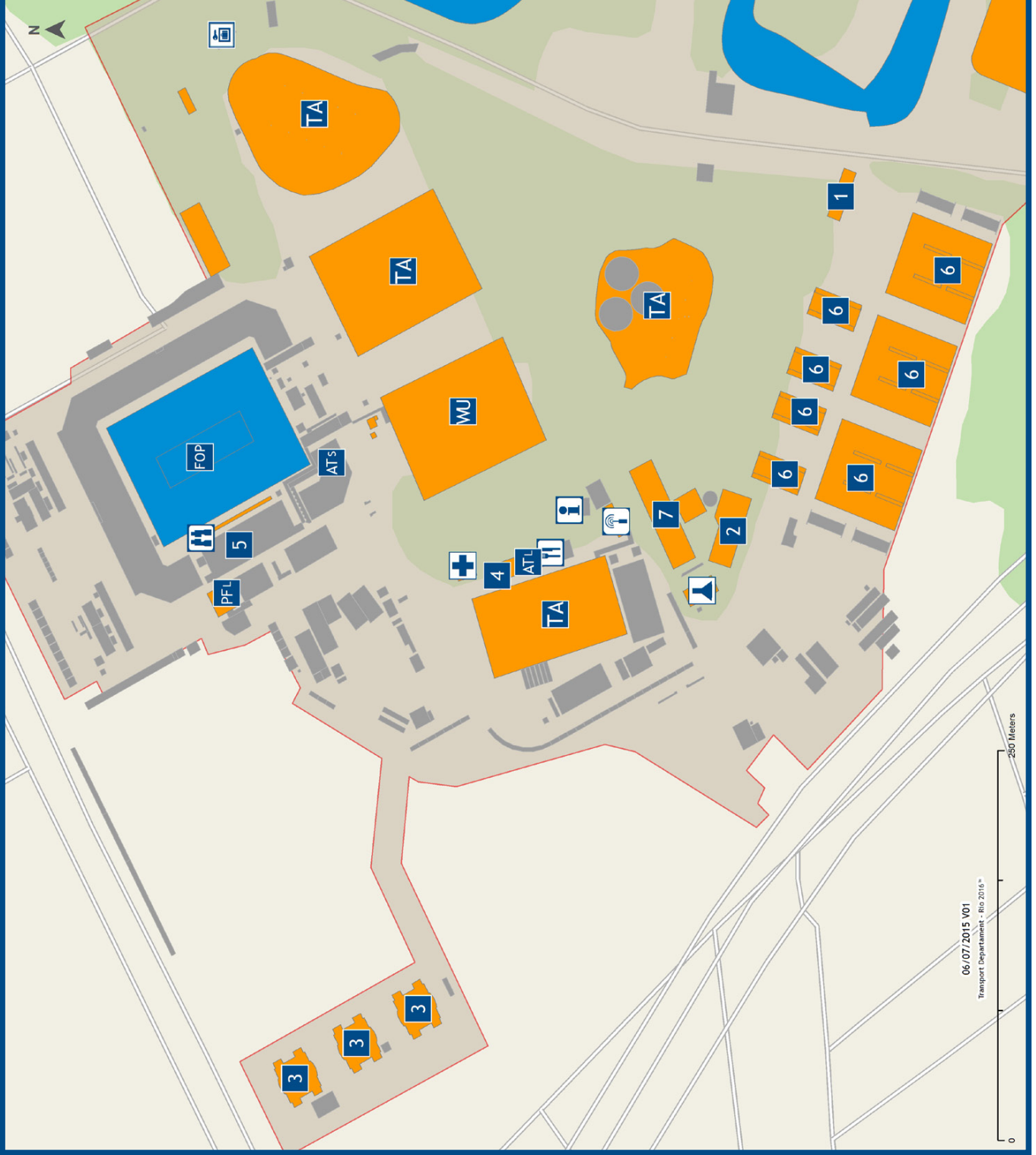
- COMPETITION VENUES
- PARALYMPIC VILLAGE
- ACCOMMODATION
- LRT
- BRT - TRANSCARIOCA
- BRT - TRANSOESTE
- BRT - TRANSOLÍMPICA
- METRO
- RAILWAY
- PORT
- DOMESTIC AIRPORT
- INTERNATIONAL AIRPORT
- GAMES FAMILY HOSPITALS
- COMPETITION VENUES
- FTC - FORT COPACABANA
- GLO - MARINA DA GLÓRIA
- LAG - LAGOA STADIUM
- OLS - OLYMPIC STADIUM
- PON - PONTAL
- SBD - SAMBÓDROMO



Equestrian - Olympic Equestrian Centre

LEGEND

-  ATHLETES' DINING
-  ATL ATHLETES' LOUNGE
-  ATHLETES' MEDICAL POST
-  ATs ATHLETES' SEATING
-  COMPETITION MANAGEMENT
-  1 COMPOST AREA
-  EQUIPMENT STORAGE
-  2 FARRIER
-  FOP FIELD OF PLAY
-  3 GROOMS' ACCOMMODATION
-  HORSE DOPING CONTROL
-  HORSE INSPECTION
-  4 ITO/NTO WORK AREA
-  PFL PARALYMPIC FAMILY LOUNGE
-  5 PARALYMPIC FAMILY SEATING
-  SPORT INFORMATION
-  6 STABLES
-  TA TRAINING AREA
-  7 VETERINARY CLINIC
-  WU WARM-UP AREA/TRAINING AREA



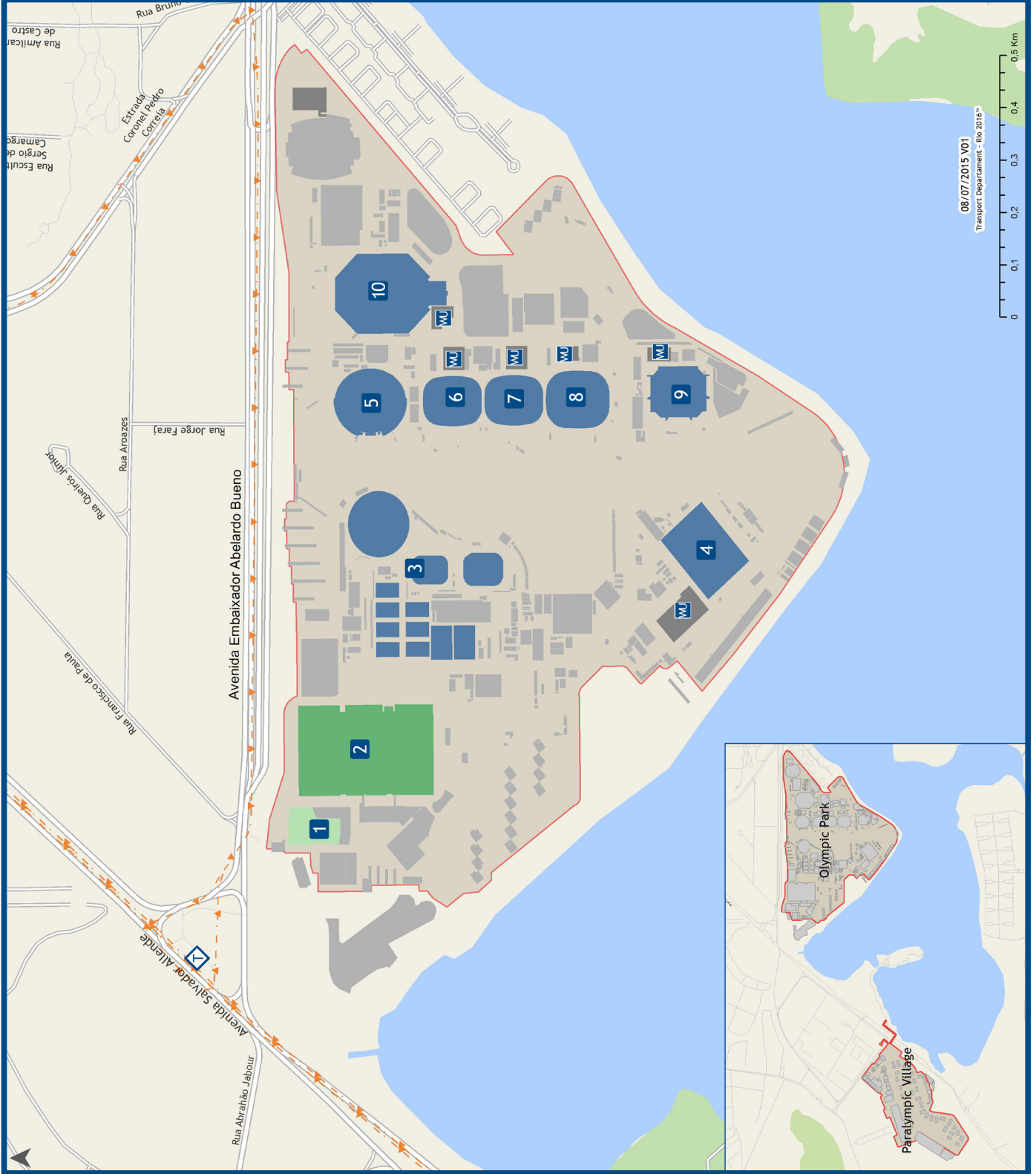
Barra Olympic Park Overview

LEGEND

- WARM-UP AREA
- COMPETITION VENUES
- COMPOUNDS
- BRT - TRANSOLÍMPICA
- BRT TERMINAL
- SECURE PERIMETER


COMPETITION VENUES

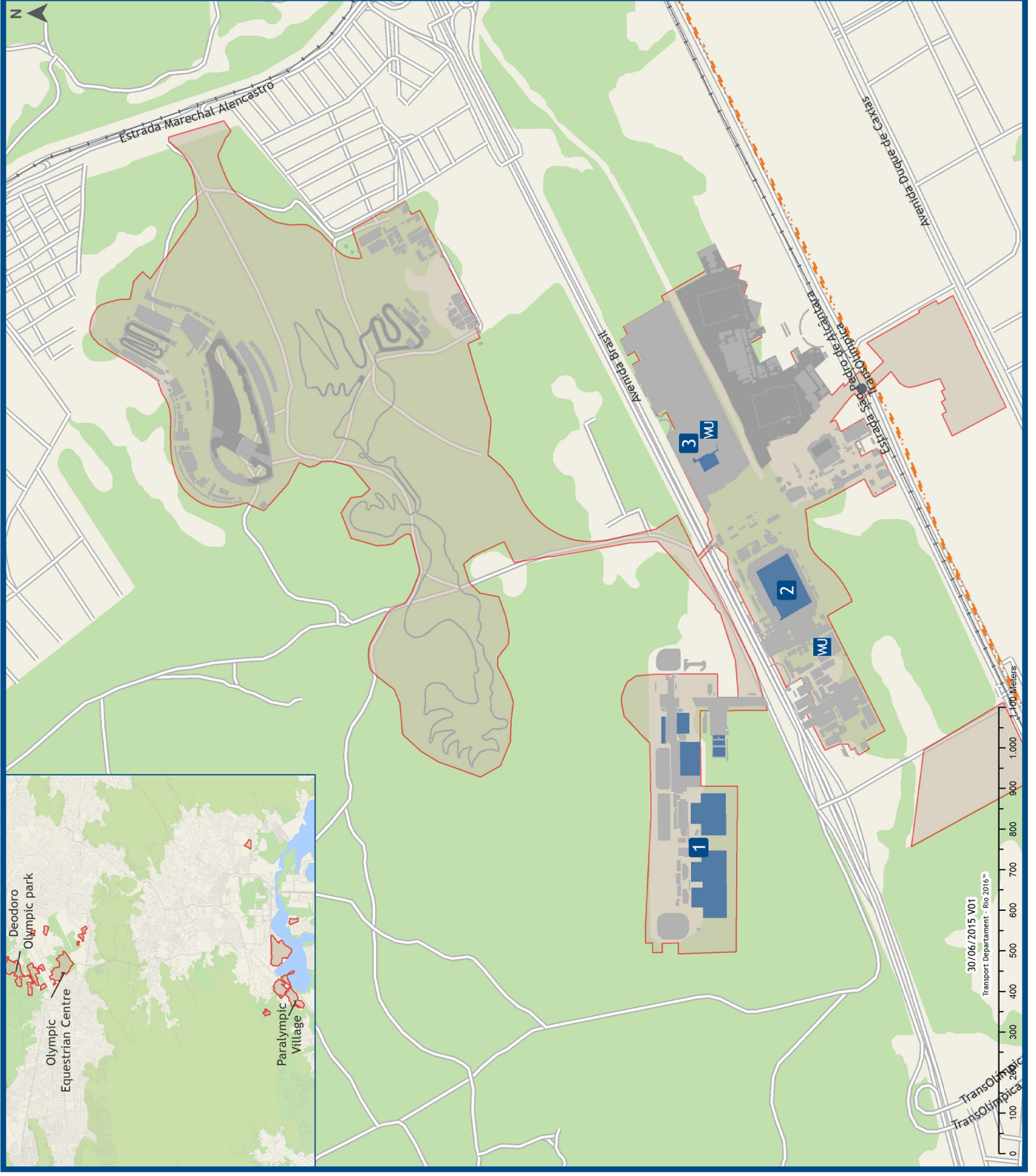
- 1** MAIN PRESS CENTRE
- 2** INTERNATIONAL BROADCAST CENTRE
- 3** OLYMPIC TENNIS CENTRE
- 4** OLYMPIC AQUATICS STADIUM
- 5** RIO OLYMPIC VELODROME
- 6** CARIOCA ARENA 3
- 7** CARIOCA ARENA 2
- 8** CARIOCA ARENA 1
- 9** FUTURE ARENA
- 10** RIO OLYMPIC ARENA



Deodoro Olympic Park Overview

LEGEND

-  WARM-UP AREA
 -  COMPOUNDS
 -  COMPETITION VENUES
 -  SECURE PERIMETER
 -  RAILWAY STATION
 -  RAILWAY LINE
 -  BRT - TRANSOLÍMPICA
-
- 1** COMPETITION VENUES
 - 1** OLYMPIC SHOOTING CENTRE
 - 2** DEODORO STADIUM
 - 3** YOUTH ARENA



Paralympic Village

LEGEND

- 1 LOGISTICS COMPOUND
- 2 POLYCLINIC
- 3 VILLAGE GYM
- 4 JUDO WEIGH-IN AREA/ORTHOTIC, PROSTHETIC AND WHEELCHAIR REPAIR CENTRE
- 5 SPORT INFORMATION CENTRE (SIC)
- 6 NPC SERVICES CENTRE
- 7 CHEFS DE MISSION MEETING HALL
- 8 CASUAL DINING
- 9 RECREATION CENTRE
- 10 TEAM WELCOME CEREMONIES
- 11 MAIN ENTRY/GUEST PASS CENTRE
- 12 MERCHANDISE STORE
- 13 MULTI-FAITH CENTRE
- 14 COURTS
- 15 VILLAGE PLAZA
- 16 WELCOME CENTRE
- 17 CLASSIFICATION AREA
- 18 MAIN DINING HALL
- P NPC CAR PARK
- R RESIDENT CENTRES
- R²⁴ RESIDENT CENTRES (24 HOURS)
- ↔ RESIDENTS' ENTRANCE
- ↔ VEHICLE ACCESS
- 🚗 TRANSPORT MALL
- PSA PSA
- VSA VSA
- 📏 PERIMETER
- ➔ INTERNAL VILLAGE SHUTTLE
- ▲ CONDOMINIUM ENTRANCE/EXIT

